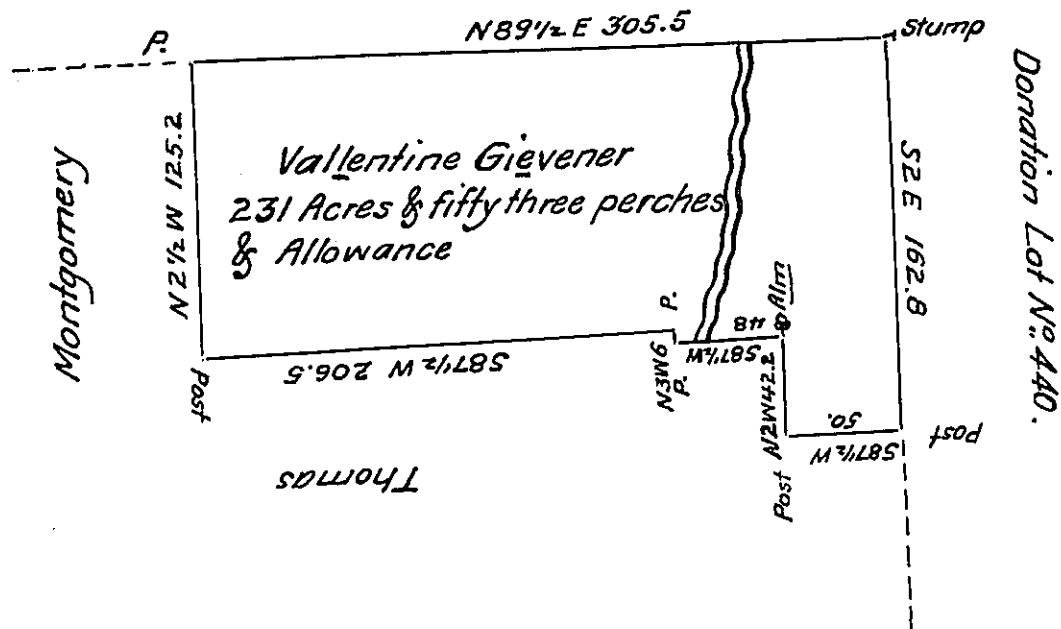


on the line Between the 3rd & 4th Donation Dist.



Situate in Wolfcreek Township Mercer County on the West Branch of Wolfcreek
 Containing two hundred and thirty one Acres and fifty three perches & Allowance of Six
 per cent for Roads & C^o. Surveyed May 14th 1840. for John Montgomery who was then Residing
 on it with his Family but now Returned for Valentine Givener who is now liveing on the same
 haveing pursessed the same October 16th 1845.

To John Laporte Esq.
 Surveyor General.

by me John Findley D.S.

IN TESTIMONY that the above is a copy of the original remaining on file in
 the Department of Internal Affairs of Pennsylvania, made
 conformably to an Act of Assembly approved the 16th day of
 February, 1833, I have hereunto set my Hand and caused
 the Seal of said Department to be affixed at Harrisburg,
 this seventh day of May 1908

Henry Horck
 Secretary of Internal Affairs.